

Illustration - Type - E

3 611 J09 000
 Issue/ Stand | 23-03-22 **Fig./Abb. 1**

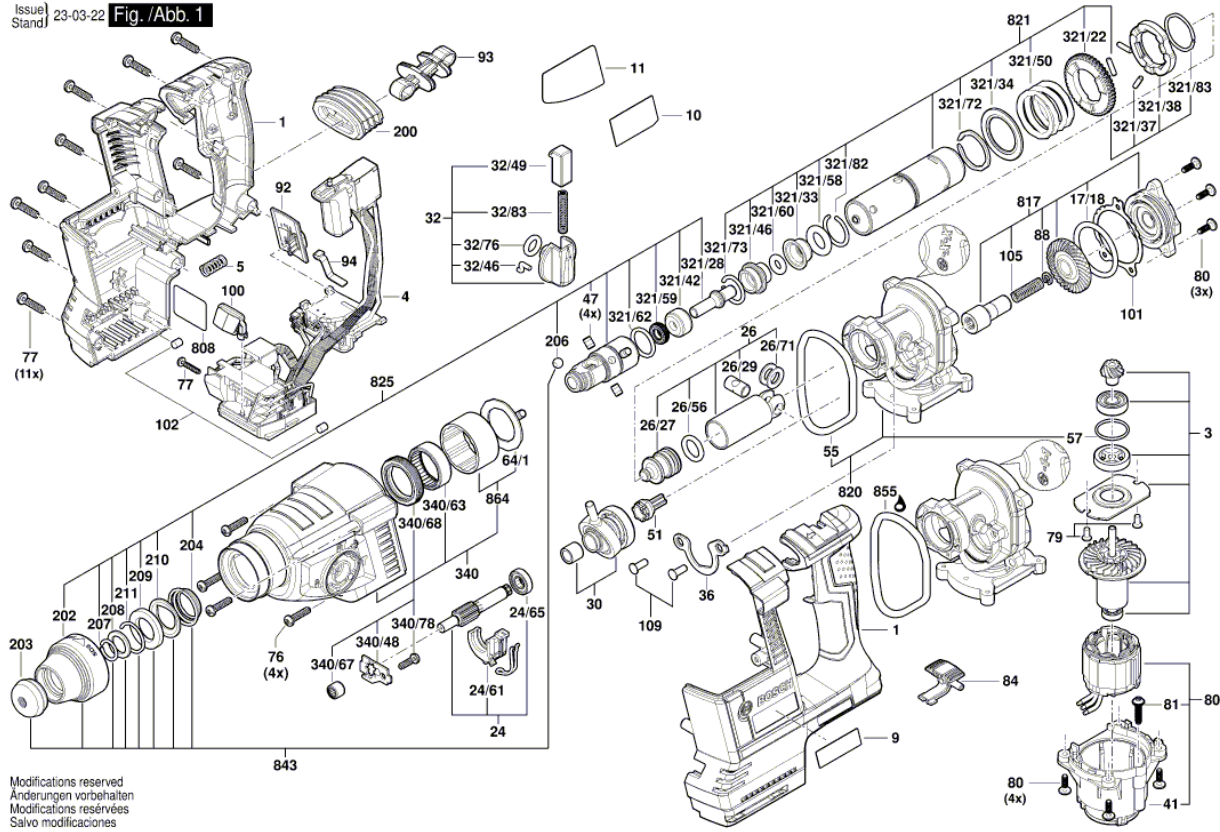
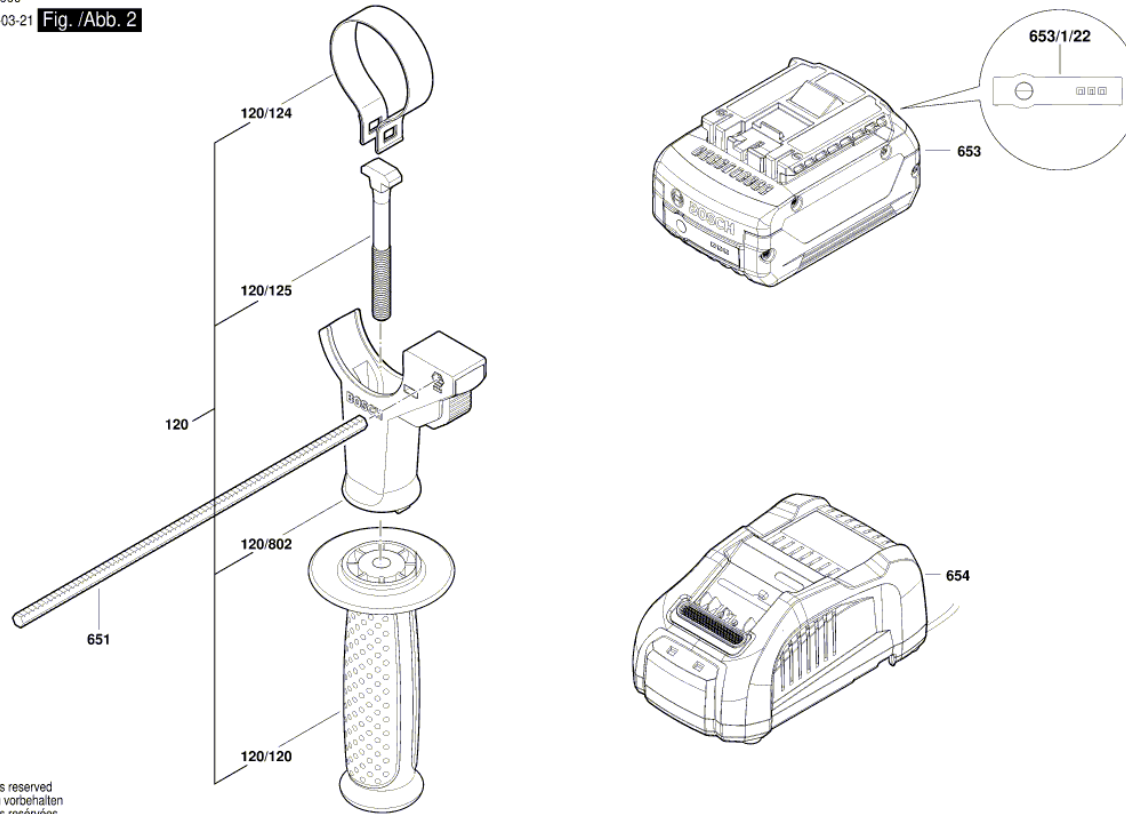


Illustration - Type - E

3 611 J09 000
Issue | 17-03-21
Stand | **Fig. /Abb. 2**



Modifications reserved
Änderungen vorbehalten
Modifications réservées
Salvo modificaciones

Spare parts list

Item	Part Number	Description	Illustration
1	1 605 108 2B2	Housing Section	1
3	1 600 A00 AR1	Rotor	1
4	1 607 233 59J	Electronics Module	1
5	1 609 280 477	Compression Spring	1
9	1 601 11C ORN	Manufacturer's nameplate	1
10	1 601 11C ORP	Manufacturer's nameplate	1
11	1 601 11C ORX	Reference Plate	1
17/18	1 610 210 156	O-Ring 39,0x3,0 MM	1
24	1 600 A00 H7C	Jack Shaft	1
24/61	1 600 A00 MX9	Switching Element	1
24/65	1 610 905 016	groove ball bearing	1
26	1 600 A00 H7D	Hammer Piston	1
26/27	1 600 A00 733	Striker	1
26/29	1 600 A01 TD0	Piston Pin	1
26/56	1 610 210 187	O-Ring	1
26/71	1 610 100 016	Guide Disc	1
30	1 600 A00 H7E	Drive bearing Auf Zeichnung Pos.830	1
32	1 612 026 037	Clamp Handle BLACK	1
32/46	1 614 690 002	Driver Pin	1
32/49	1 612 026 035	Switch Button RED	1
32/76	1 610 210 046	O-Ring 10,5x2,7 MM	1
32/83	1 614 611 006	Compression Spring	1
36	1 600 A00 7TL	Bearing Holder	1
41	1 605 108 2B8	Motor Housing	1
47	1 613 100 030	Needle Roller	1
51	1 600 A00 7JH	Control Element	1
55	1 610 210 206	Seal Ring 63,0x5,0 MM	1
57	1 610 210 208	O-Ring 24,0x2,0 MM	1
64/1	1 610 190 060	Supporting Disc	1
76	1 613 435 022	Thread-forming tap. Screw	1
77	2 603 490 023	Torx Oval-Head Screw 4x20	1
79	1 613 435 023	Thread-forming tap. Screw	1
80	1 603 430 00V	Torx Oval-Head Screw	1
81	1 603 435 086	Torx head screw	1
84	1 600 A00 1E5	Switch Slide	1

Spare parts list

Item	Part Number	Description	Illustration
88	2 916 660 042	Retaining ring	1
92	1 600 A00 1ED	Control Element	1
93	1 600 A00 798	Guide Piece	1
94	1 601 200 006	Leaf Spring	1
100	1 600 A00 752	Lens	1
101	1 600 A00 7RX	Adjusting disk 0,200	1
101	1 600 A00 7RY	Adjusting disk 0,3	1
101	1 600 A00 7RZ	Adjusting disk 0,4	1
102	2 603 100 056	Damping rubber	1
105	1 600 A00 7RE	Compression Spring	1
109	1 603 435 07U	Thread-forming tap. Screw	1
200	1 600 A00 1CL	Bellows	1
202	1 600 A02 8AU	Protection Sleeve	1
203	1 610 508 047	Protective Cap	1
204	1 614 643 003	Compression Spring	1
206	1 903 230 013	Ball DIN 5401-Ø7MM-III-ST	1
207	1 614 601 027	Retaining ring	1
208	1 610 101 629	Retaining Washer	1
209	1 610 102 025	Friction Washer	1
210	1 610 190 011	Holding Plate	1
211	1 604 601 02S	Retaining ring	1
321/22	1 600 A00 7JW	Cylindrical Gear	1
321/28	1 613 124 081	Striker Pin	1
321/33	1 610 590 014	Holding Jacket	1
321/34	1 610 190 067	Supporting Disc	1
321/37	1 613 100 019	Straight Pin DIN6325-2,5x12-RIKO	1
321/38	1 600 A00 8AG	Catch Disk	1
321/42	1 610 102 073	Thrust Ring	1
321/46	1 610 390 051	Guide Bushing	1
321/50	1 614 611 020	Compression Spring	1
321/58	1 610 210 178	O-Ring	1
321/59	1 610 283 035	Rotary shaft lip seal	1
321/60	1 610 210 176	O-Ring 9,0x3,5 MM	1
321/62	1 610 210 179	O-Ring	1
321/72	1 604 601 027	Retaining ring	1

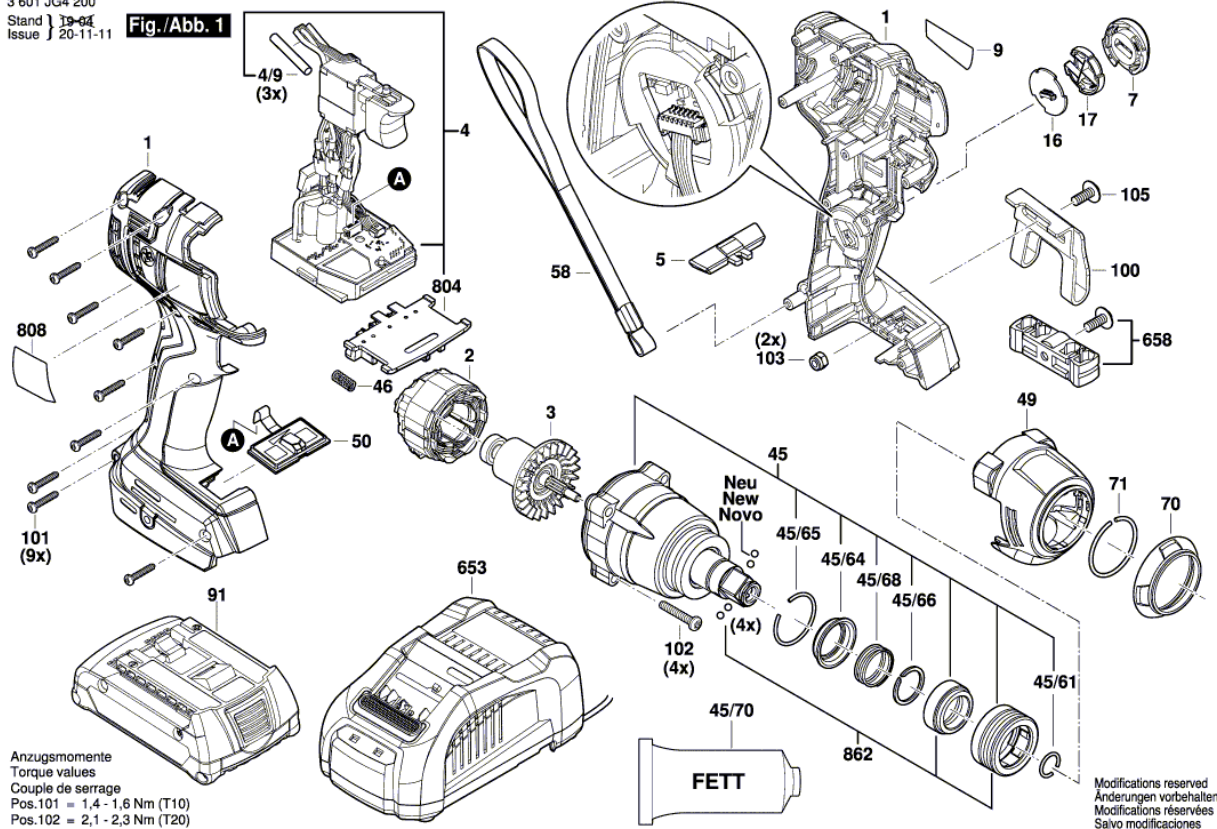
Spare parts list

Item	Part Number	Description	Illustration
321/73	1 614 601 012	Retaining ring	1
321/82	1 614 601 034	Retaining ring	1
321/83	1 604 601 028	Retaining ring A22 DIN 7993	1
340	1 600 A00 H7F	Impact Mechanism Housing	1
340/48	1 611 098 008	Tab Washer	1
340/63	1 610 910 063	Needle bearing Ø30xØ37x12 MM	1
340/67	1 610 910 098	Needle bearing	1
340/68	1 610 283 036	Rotary shaft lip seal	1
340/78	2 603 490 022	Screw 4x16	1
802	1 600 A01 5E8	Stator	1
808	1 601 11A 3H9	Nameplate	1
817	1 607 000 C8Y	Bearing Flange	1
820	1 607 000 C8X	Intermediate Flange	1
821	1 607 000 C8Z	Pipe	1
825	1 617 000 598	Tool Holding Fixture	1
843	1 617 000 582	Protection Sleeve	1
855	1 600 210 07U	O-Ring	1
864	1 617 000 A07	Supporting Disc	1
120	1 602 025 08X	Auxiliary Handle	2
120/120	1 602 025 07H	Auxiliary Handle	2
120/124	1 611 316 021	Clamping Band Ø50 MM	2
120/125	1 613 490 002	T-Head Bolt M8x40 MM	2
120/802	1 617 000 475	Support clamp	2
651	1 613 001 009	Depth-Gauge SW 6x210 MM	2
653	1 607 A35 0AS	Battery Pack KOR GBA 18V 8.0Ah ProCore SCM	2
653	2 607 337 069	Battery Pack BBS MR, 18V, 5,0 Ah 48 S	2
653	2 607 337 263	Battery Pack GBA 18V 6.0 AH	2
653/1/22	2 601 115 537	Sticker	2
654	2 607 225 921	Charger EU GAL 1880 CV 230/14,4-18V	2
654	2 607 225 933	Charger ROK GAL 1880 CV 220V/14,4-18V	2

Illustration - Type - E

3 601 JG4 200
 Stand | 19-04
 Issue | 20-11-11

Fig./Abb. 1



Spare parts list

Item	Part Number	Description	Illustration
1	1 605 806 5CZ	Housing	1
2	1 619 P14 412	Stator	1
3	1 619 P14 405	Rotor	1
4	1 607 233 5EV	Electronics Module	1
4/9	1 600 712 03S	Shrinkable Tube	1
5	1 600 A01 1KN	Changeover Lever	1
7	1 600 A00 RU8	Cover unit	1
9	1 601 11C 28M	Manufacturer's nameplate	1
16	1 607 503 333	Printed-Board Assembly	1
17	1 600 A00 M53	Cover Panel	1
45	1 600 A01 PG3	Gear Box	1
45/61	0 618 800 045	Retaining ring	1
45/64	1 600 A00 NR9	Holding Jacket	1
45/65	1 604 601 032	Retaining ring	1
45/66	1 604 601 031	Retaining ring	1
45/68	0 618 800 047	Compression Spring	1
45/70	1 600 A00 2NE	Grease Tube 45 ml	1
46	1 609 280 477	Compression Spring	1
49	1 600 A00 J37	Cover	1
50	1 600 A01 3BB	Keyboard	1
58	2 609 100 301	Strap	1
70	1 600 A01 1DL	Protective Cap	1
71	1 604 601 037	Retaining ring	1
91	1 607 A35 0AM	Battery Pack KOR GBA 18V 4.0Ah ProCore SCM	1
91	1 607 A35 0AN	Battery Pack GBA 18V 4.0Ah ProCore SCM	1
91	2 607 337 069	Battery Pack BBS MR, 18V, 5,0 Ah 48 S	1
91	2 607 337 267	Battery Pack GBA 18V 6,0Ah M-C	1
100	2 609 111 584	Clip	1
101	2 609 110 201	Torx Flat-Head Screw 3x16	1
102	0 618 800 04W	Torx Flat-Head Screw	1
103	2 609 110 835	Nut	1
105	2 609 110 834	Screw	1
653	2 607 225 921	Charger EU GAL 1880 CV 230/14,4-18V	1
653	2 607 225 923	Charger GB 230/10,8-18V, 30 42 S	1

Spare parts list

Item	Part Number	Description	Illustration
658	2 609 199 748	Bit holder	1
804	1 609 280 820	Contact retainer 18V	1
808	1 601 11A 599	Nameplate	1
862	1 600 A01 N0V	Sleeve assembly	1

Illustration - Type - E

3 601 JG3 101
 Stand | 19-08
 Issue | 22-11-23

Fig. /Abb. 1

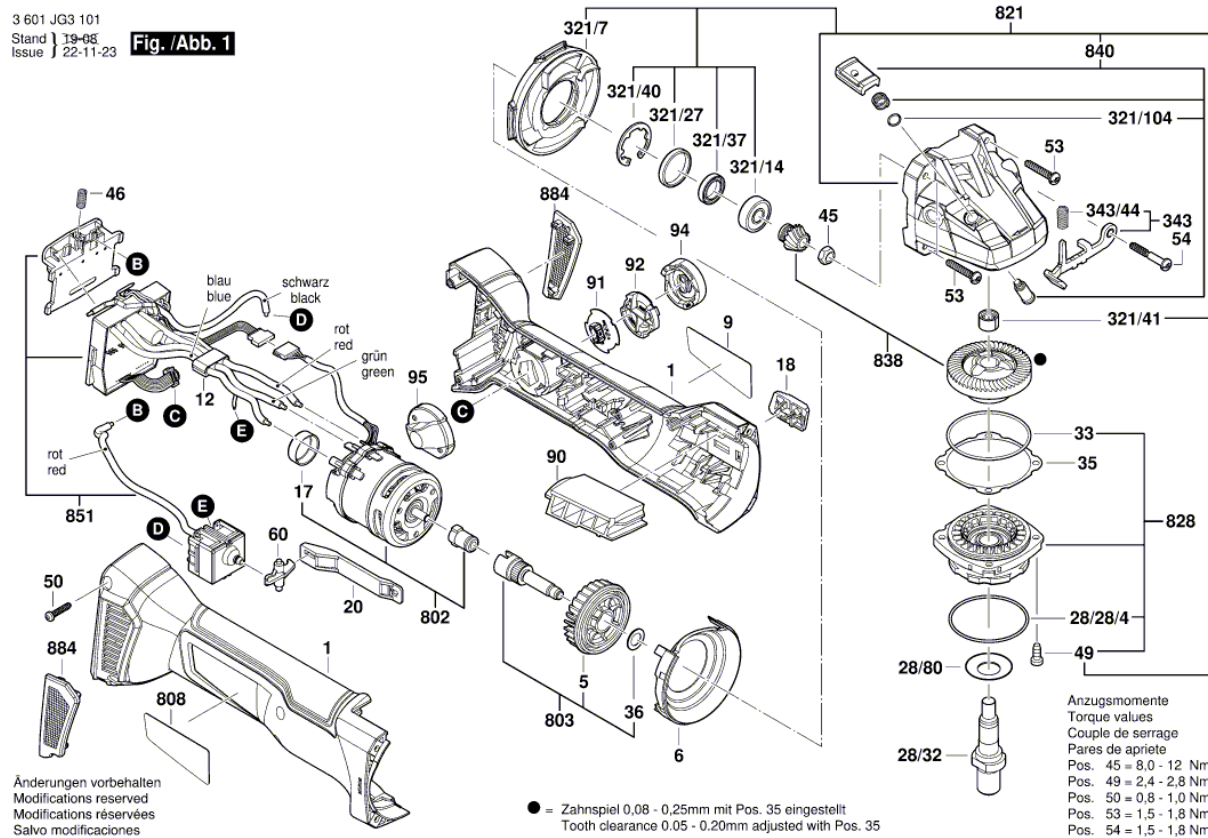
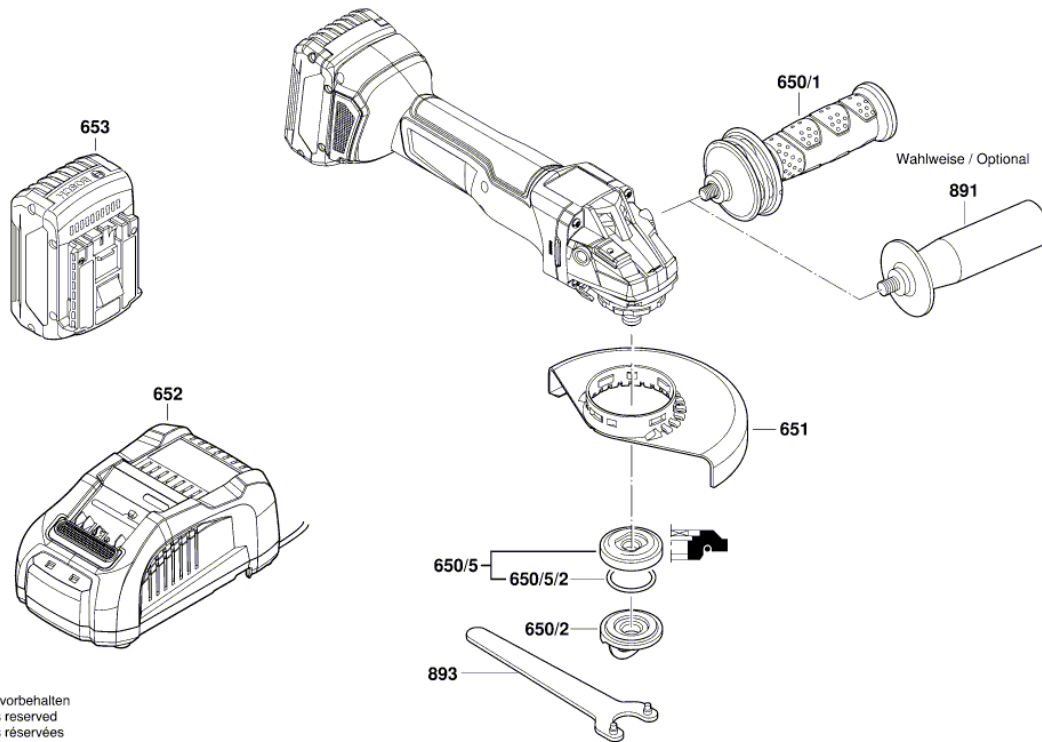


Illustration - Type - E

3 601 JG3 101
Stand | 18-02
Issue | 18-07-04 **Fig. /Abb. 2**



Änderungen vorbehalten
Modifications reserved
Modifications réservées
Salvo modificaciones

Spare parts list

Item	Part Number	Description	Illustration
1	1 605 108 2DU	Motor Housing	1
5	1 606 610 16E	Fan	1
6	1 600 591 065	Air-Deflector Ring	1
9	1 601 11C 2MT	Manufacturer's nameplate	1
12	1 600 A00 RK2	Ferrite	1
17	1 600 100 P12	Cover	1
18	1 600 A00 P2P	Switch Handle	1
20	1 600 A00 P14	Adjusting Slide	1
28/28/4	3 600 210 109	O-Ring 47,0x1,5 MM	1
28/32	1 607 000 D6A	Grinding Spindle	1
28/80	1 619 P09 390	Cover Disc	1
33	1 600 210 035	O-Ring 46,0x1,1 MM	1
35	1 600 136 013	Shim 0,1 MM THICK	1
35	1 600 136 014	Shim 0,2 MM THICK	1
35	1 600 136 015	Shim 0,3 MM THICK	1
35	1 600 136 020	Shim 0,15 MM THICK	1
36	1 610 100 023	Washer	1
45	1 603 300 016	Hex Nut M7, SW10	1
46	1 609 280 477	Compression Spring	1
49	2 914 491 410	Thread-forming tap. Screw M4x16	1
50	1 603 435 071	Thread-forming tap. Screw	1
53	1 603 435 078	Torx Oval-Head Screw	1
54	1 603 414 026	Torx Oval-Head Screw 4x30	1
60	1 600 A00 P18	Reverse-Transfer Lever	1
90	1 600 A00 P2N	Cover	1
91	1 607 503 438	Electronics Module	1
92	1 600 A00 M53	Cover Panel	1
94	1 605 500 2BV	Cover	1
95	1 600 A00 P1B	Cover	1
321/104	1 600 210 044	O-Ring 4,5x1,0 MM BLUE	1
321/14	1 600 905 032	groove ball bearing 8x22x7	1
321/27	1 600 206 025	Rubber Ring	1
321/37	1 600 A00 P17	Holder	1
321/40	1 600 119 011	Retaining clip	1
321/41	1 600 200 029	Plain bearing	1

Spare parts list

Item	Part Number	Description	Illustration	Price	Quantity	Price Group
321/7	1 600 591 05N	Air Distributor	1		1	12
343	1 607 000 742	Catch Lever	1		1	20
343/44	1 604 611 042	Compression Spring	1		1	11
802	1 607 000 CA4	Motor	1		1	45
803	1 607 000 CA5	Bevel Gear Shaft	1		1	24
808	1 601 11A 62S	Nameplate	1		1	13
821	1 607 000 CA6	Gear Housing	1		1	38
828	1 607 000 D6D	Bearing Flange	1		1	26
838	1 607 000 CA8	Gear Unit	1		1	30
840	1 607 000 V41	Push-Button	1		1	16
851	1 607 000 D5V	Electronics Module	1		1	46
884	1 607 000 CA9	Filter Unit	1		1	23
650/1	1 602 025 0A0	Auxiliary Handle	2		1	23
650/2	1 619 P09 976	Round Nut With 2 Holes	2		1	12
650/5	2 605 703 014	Clamping Flange Ø22,3xØ42 MM	2		1	20
650/5/2	1 600 210 055	O-Ring 20,35x1,78 MM	2		1	10
651	1 600 A00 XK8	Protective Cover 115 MM	2		1	26
652	2 607 226 317	Fast Charger EU GAL 18V-160 C 230	2		1	49
653	1 607 A35 0AT	Battery Pack GBA 18V 8.0Ah ProCore SCM	2		1	52
653	2 607 337 069	Battery Pack BBS MR, 18V, 5,0 Ah 48 S	2		1	46
653	2 607 337 263	Battery Pack GBA 18V 6.0 AH	2		1	50
891	1 602 025 09T	Auxiliary Handle	2		1	15
893	1 607 950 052	Pin-Type Face-Wrench	2		1	15